



Design in
Adobe Illustrator
and / or
CorelDRAW
and present in 3D
with CAR-SPECIAL

From 2D to 3D in 4 steps

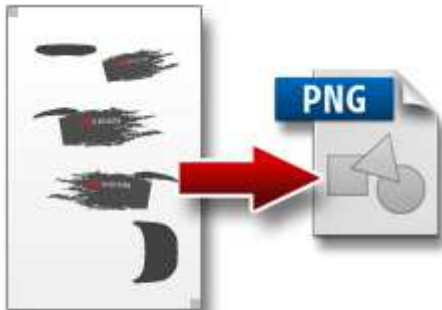
1) Download



2) Design



3) Export



4) Upload



SoftDirect Nederland BV | Mercatorweg 2-2 | 8501 XK | Joure | The Netherlands


NL + 31 (0) 513 41 77 90 **UK** + 44 (0) 20 39 36 11 06 **DE** + 49 (0) 322 2109 9711

FR + 33 (0) 4 81 68 25 25 64 **ES** + 34 (0) 9190 181 32

www.softdirect.nl www.carspecial.co.uk www.carspecial.nl www.cuttingmatsxxl.com

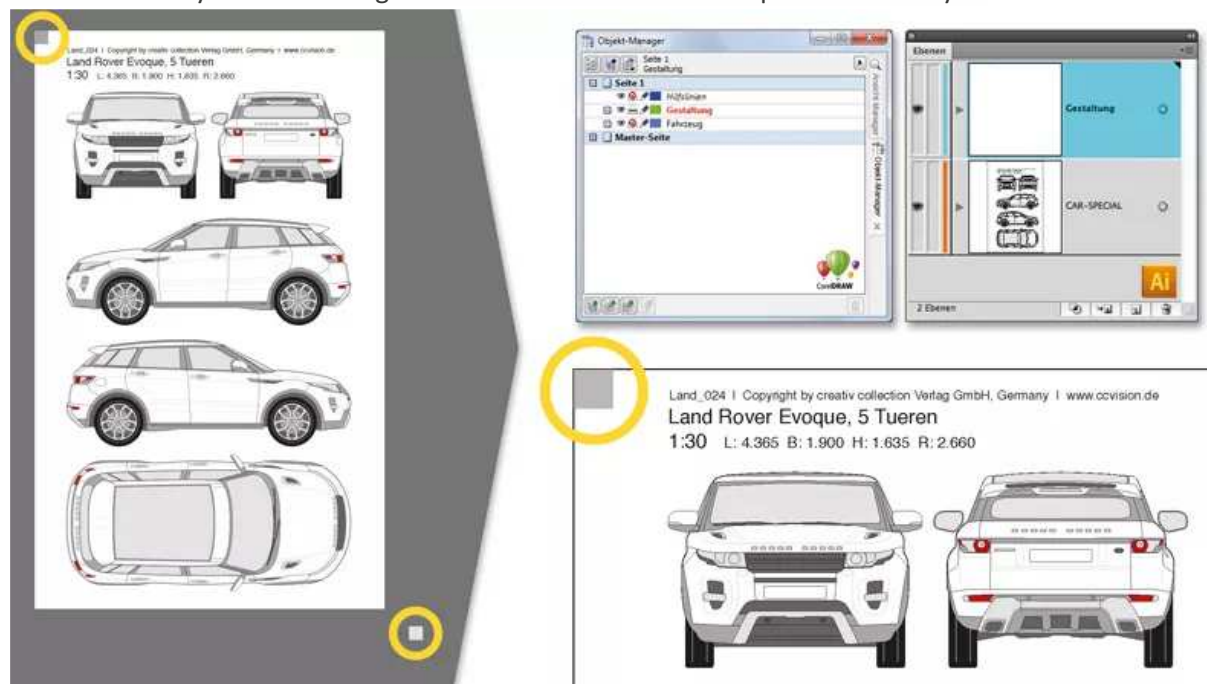
1) Download

Download the desired vehicle drawing with the 3D icon. These drawings contain 3D information that you cannot see in Adobe Illustrator and/or CorelDRAW.

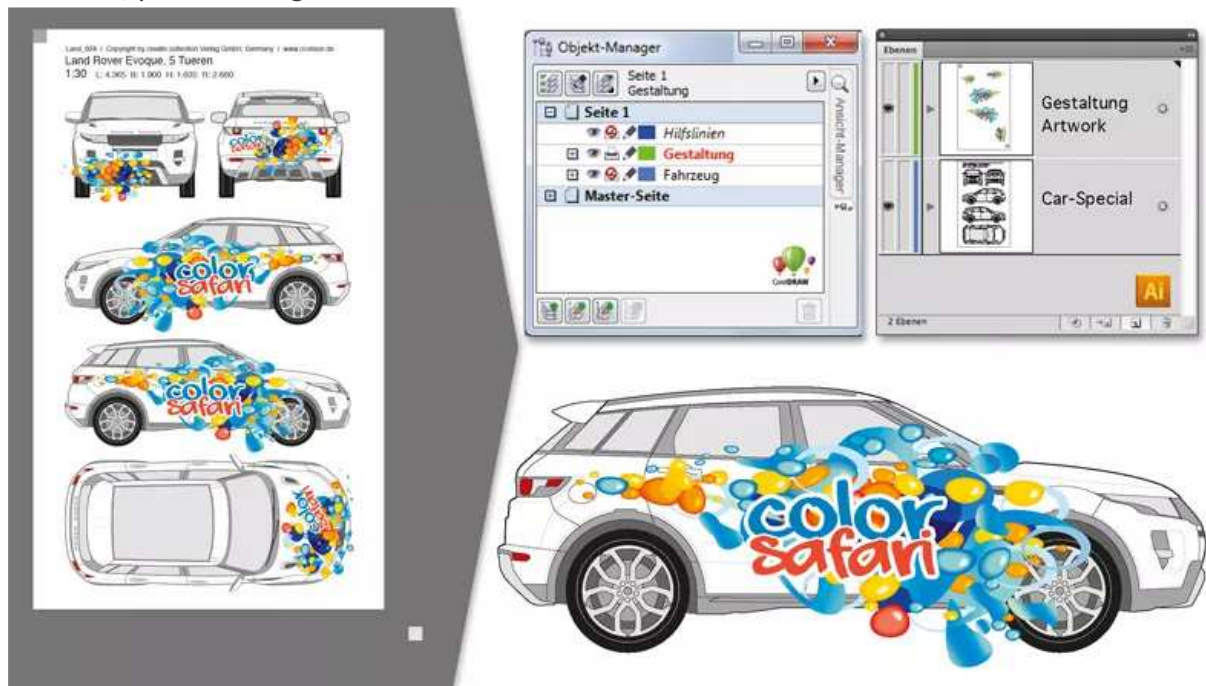
	Dateinummer: Land_029 Bezeichnung: Land Rover Evoque Baujahr: seit 2016 (aktuell) Karosserie: Cabrio Türen: 2 Türen Maße (mm): Länge: 4.370 Breite: 1.900 Höhe: 1.609 Radstand: 2.660	
	Dateinummer: Land_024 Bezeichnung: Land Rover Evoque Baujahr: seit 2011 (aktuell) Karosserie: Kombi Türen: 5 Türen Maße (mm): Länge: 4.365 Breite: 1.900 Höhe: 1.635 Radstand: 2.660	
 	Dateinummer: Land_025 Bezeichnung: Land Rover Evoque Coupe Baujahr: seit 2011 (aktuell) Karosserie: Coupé Türen: 3 Türen Maße (mm): Länge: 4.355 Breite: 1.900 Höhe: 1.605 Radstand: 2.660	

2) Design

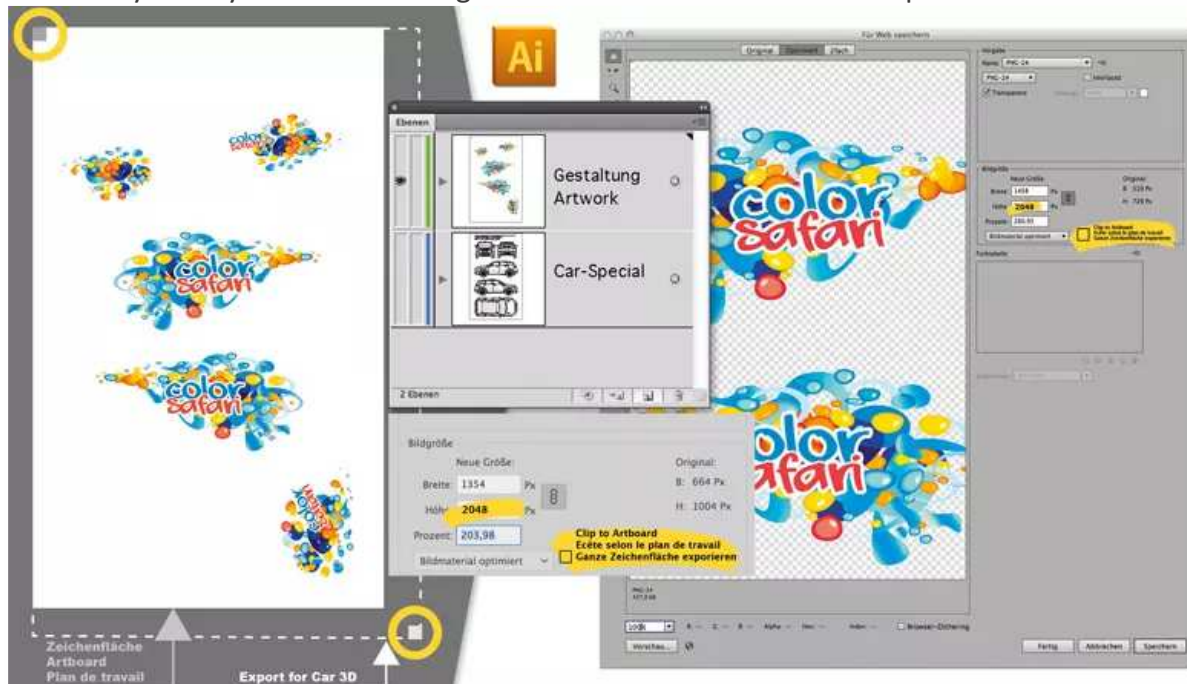
Open the 3D-ready CAR-SPECIAL vehicle file with Adobe Illustrator or CorelDRAW.
The structure is completely similar to the 2D drawings, so you don't have to get used to it.
Create a new layer for the design and move the small border squares to this layer.



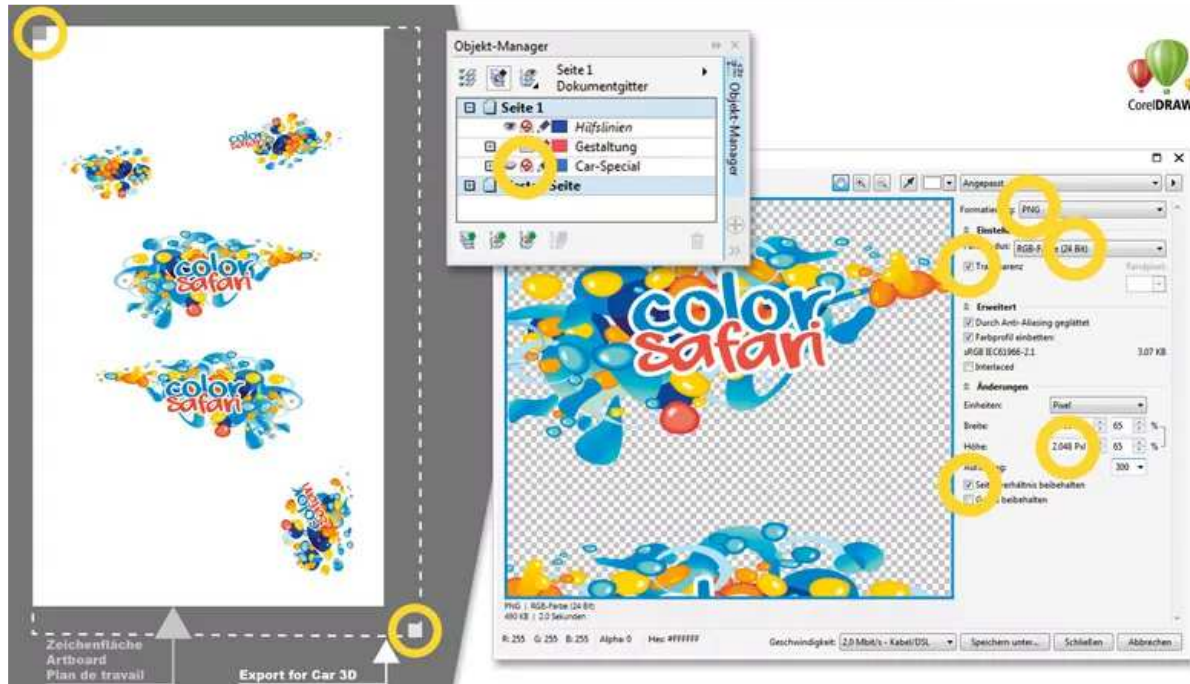
Design the vehicle as usual with fonts, logos and images.
 All design elements must be within the bounding squares.
 Of course, you can also give the vehicle a color.



Hide the layer with the vehicle drawing.
 Leave only the layers with the design elements and the two border squares.



In CorelDRAW, the layer with the vehicle drawing must be set to "do not print".



3) Export

CorelDRAW : File / Export for / Web

Adobe Illustrator : File / Save for web

Export the vehicle design as a "PNG file" to your project folder:

- Transparent background
- RGB (24 bit)
- Height: 2048 pixels (click on "Apply" if necessary)
- Keep aspect ratio

Warning:

The original file name must be retained, but can be supplemented with an underscore. Do not use umlauts.

e.g. **Audi_069_projektXY**

SoftDirect Nederland BV | Mercatorweg 2-2 | 8501 XK | Joure | The Netherlands

NL + 31 (0) 513 41 77 90 **UK** + 44 (0) 20 39 36 11 06 **DE** + 49 (0) 322 2109 9711

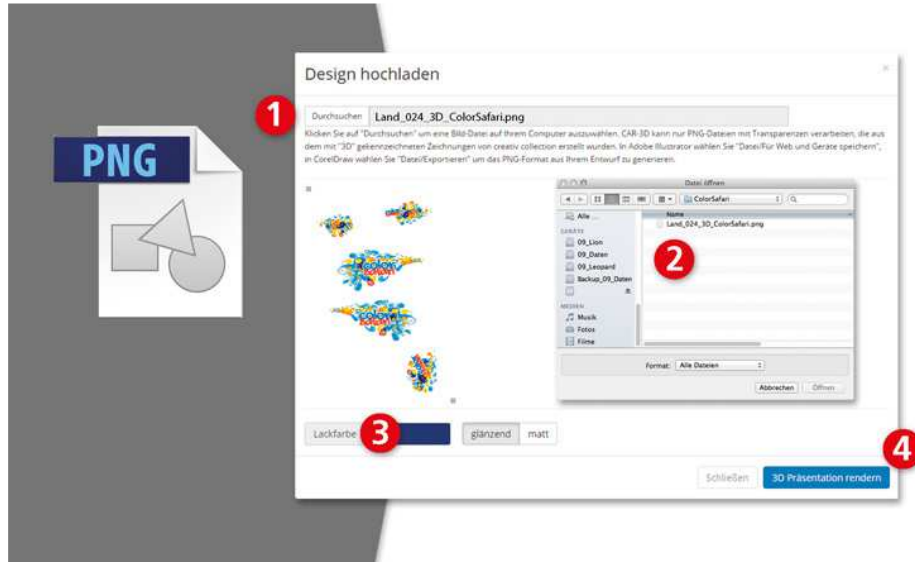
FR + 33 (0) 4 81 68 25 25 64 **ES** + 34 (0) 9190 181 32

www.softdirect.nl www.carspecial.co.uk www.carspecial.nl www.cuttingmatsxxl.com

4) Upload

- a) Start CAR-3D
- b) Click on "Search" and select the PNG file that you have just exported.
- c) Click on "render 3D presentation" to start importing your design to CAR-3D.
Your model is now calculated.

Please wait while your 3D model is being calculated. This may take several minutes.



- d) Turn and zoom on the model until the desired position is reached. You can now print your finished model or save it as a JPEG image and send it for presentation.

